

Queen Elizabeth II

National Trust

# newsletter

No. 19 FEBRUARY 1990

## Ceremony Marks Protection of Matua Estuary

**O**n 9 October 1989 a small but significant ceremony was held in Tauranga to mark the completion of complex negotiations culminating in the protection of the Matua Estuary (see Newsletter 18).

This is an important estuarine area of

some 16 hectares, situated in Tauranga Harbour. Formerly privately owned, much of it drained and grazed, and some destined for subdivision, the Estuary is now owned by Tauranga City Council, and protected by a National Trust Open Space Covenant. The City Council and



Anne Graham, Ken Davidson, Joy Drayton and John Turner at the Matua Estuary opening.

### IN THIS ISSUE

A New Profile	2	The School Covenant Project	12
T'Anson Reserve	3	Revised Legislation	15
Lucy Moore Bequest	5	Taranaki Gardens News	16
Registered Covenants	6	Indigenous Forest Policy	17

Department of Conservation made substantial financial contributions to the purchase, as did the National Trust which also managed all the negotiations to complete the project.

The local branch of Royal NZ Forest & Bird Protection Society were instrumental in initiating the protection of the Estuary; it was therefore very appropriate that the ceremony should be held at the home of Basil and Ann Graeme, who are very active in the Society in the Bay of Plenty.

Trust Director, Jenny Seddon, Tauranga deputy Mayor Joy Drayton and Basil Graeme spoke; and Trust General Manager, Euan McQueen presented the Graemes with a book to mark the Trust's appreciation of their work for conservation in general, and toward protection of the Matua Estuary in particular. Ken Davidson, Special Adviser for the National Trust, who negotiated the purchase arrangements, also attended the ceremony.

---

## A New Profile - And Funding — For The Trust

**A**s a result of a financing plan set out by the Minister of Conservation it is possible to forecast the sums available from government grants over the next few years with reasonable accuracy. As part of that plan the National Trust is now looking to increased funding from non-government sources.

At its August meeting the Board of Directors approved expenditure for a project which aims to raise the profile of the Trust, especially to urban and corporate New Zealanders, and to seek subscriptions and donations from the corporate sector on a much greater scale than has been the case up to now.

This programme was launched at an evening function at Government House, hosted by Their Excellencies, Sir Paul Reeves and Lady Reeves. The 230 guests were welcomed to Government House by Sir Paul and Trust Chairman, Sir Peter Elworthy spoke about the work of the Trust. A short audio-visual followed using slides from the Trust's own collection; this very effectively illustrated a range of the Trust's work. The formal part of the evening concluded with a waiata sung by Director, Marilyn Waring in response to

the karanga which introduced the audio-visual. Guests were then free to enjoy the very pleasant hospitality of Government House, while Trust Directors and staff circulated amongst the guests and talked about the Trust's work. A number of distinguished guests were present including the Maori Queen Dame Te Ata-i-rangi Kaahu.

The tone of the function was very warm and friendly with much interest being expressed in the Trust and its achievements. For many guests this was their first contact with the organisation.

The following week a letter from the Chairman was sent to all guests seeking their support for the Trust by annual subscription, or in other ways.

During 1990 the Chairman and General Manager will visit various centres to meet local body and commercial leaders, and others who could be interested in the work of the Trust. These functions — to which our local members will also be invited — will be another step toward getting the Trust and its work better known, and gaining us funding which will enable the work of protecting landscape features on private land to progress as quickly as possible.

# I'Anson Reserve

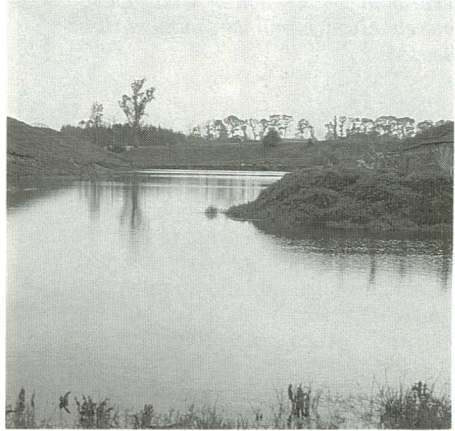
**A**nother stage in the development of the I'Anson Reserve at Tauranga was reached on 9 October 1989 with the official opening of the reserve, including the unveiling of a new sign identifying the reserve.

The reserve, which includes a recently created lake, is the result of a donation by Keith I'Anson to the National Trust and is being planted in native tree species. It is managed by the Western Bay of Plenty District Council (formerly the Tauranga County Council).

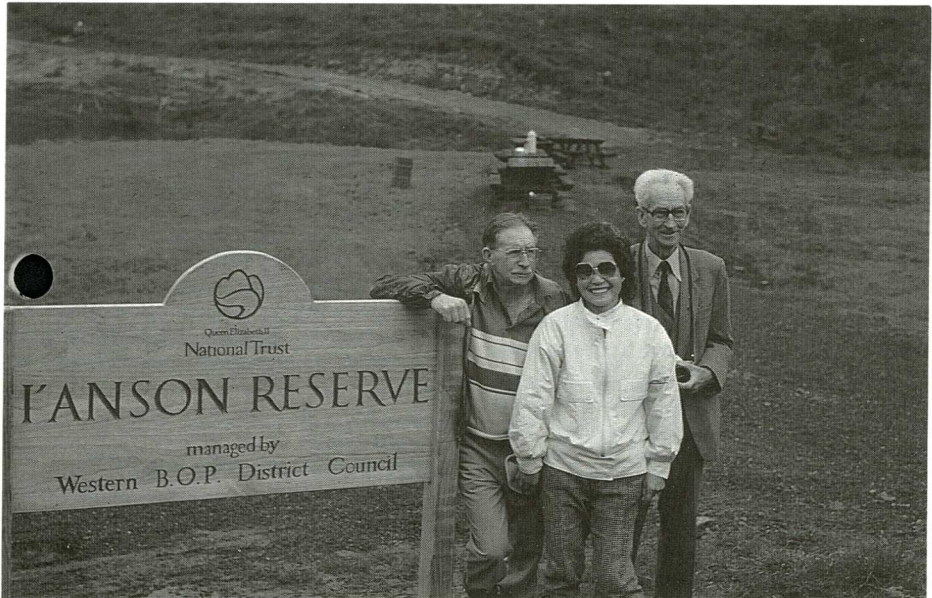
The new sign is in the style of other handsome Trust signs which are being erected at various other sites around the country. It was unveiled by Harold Cameron, Council Chairman, and Euan McQueen, National Trust General Manager.

The function was attended by representatives of the many groups which have been associated with the Reserve's

development — the Council, Royal Forest & Bird Protection Society, local schools, and other community groups.



**The newly created lake on the I'Anson Reserve.**



**Mr and Mrs I'Anson with Reg Janes (Forest and Bird Society) beside the new sign for the I'Anson Reserve.**

# Comment

*(From time to time there will be issues relating to conservation or landscape protection which prompt comment in the Newsletter.)*

Occasionally it is suggested by some observers of the National Trust that it is too low key in its approach to landscape or open space protection, that our covenanting processes are too slow, and that more direct and speedy measures should be taken with landowners who wish to see bush or other features on their land protected.

These perceptions of the Trust rest upon misunderstandings of the way the Trust works.

The activities of the Trust are firmly founded on the basis that a landholder volunteers protection of his or her land, usually by use of an open space covenant. The fact that a landowner is prepared to seek to enter into a covenant normally indicates that their particular landscape feature is already in good hands (with an on-site caretaker!). Essentially the landowner is ensuring that the present level of protection continues into the future, normally in perpetuity.

With the sharing of fencing costs and responsibility for long term maintenance, the agreement to covenant is not something that a landowner enters into hastily. There must be time to discuss the implications with family and advisers. Once a decision to proceed has been made the normal procedures of clearance from mortgagees, survey definition, fencing, registration and so on have to be completed. This can, and does, take some time and it is significant that the National Trust receives few, if any, complaints about the speed of covenant processing from landholders themselves.

Observers can be frustrated in seeing such time taken to protect land; but they

are normally talking about entirely different situations where a threat, actual or potential, exists to a particular area from an unsympathetic landowner.

In these cases there is an understandable desire by some individuals and organisations to move quickly, and by some means not yet defined 'freeze' the bush, wetland or whatever so that change cannot occur while decisions on protection by conventional methods take place.

With a system such as the National Trust's, based as it is on voluntary protection, this approach is out of the question.

This is not to say that statements, publicity, pressure, cannot or should not be brought to bear toward landscape protection. There are individuals, and organisations, with deep conservation commitments who do this with skill and dedication. The National Trust, however, sees its role as being more responsive, perhaps at times persuasive, but essentially respecting the landholder's view.

In the cause of protection and conservation there is a need for the different roles and functions indicated above. There may be times when the forces of protest and pressure will induce protection and stewardship more effectively than other means. But each case will be different, with different approaches and different solutions. It is a strength of conservation in New Zealand that there are different groups, with varied styles. It is an even greater strength when those different characteristics are recognised by the groups themselves as being of benefit to the ultimate cause.

*Euan McQueen  
General Manager*

# Lucy Moore Bequest

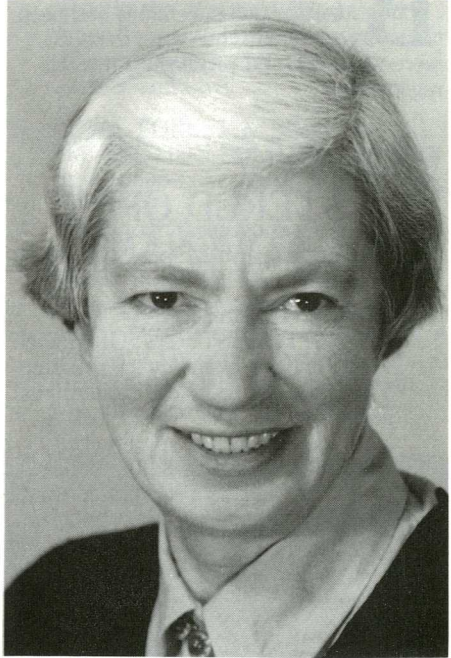
**T**he National Trust has received its first major bequest, from the estate of the late Dr Lucy Moore.

Lucy Moore was one of the country's leading botanists and was dedicated to the study of New Zealand native plants till her death in 1987. She could also be described as a botanical explorer, and covered parts of the country thoroughly either alone or with her close friend and fellow botanist Lucy Cranwell, and with other companions.

Lucy Moore was born in Warkworth in 1906 and attended primary school there before going on to Epsom Girls Grammar. At Auckland University she studied botany and graduated with first class honours in 1929. She worked for the DSIR in Wellington and Lincoln for much of her career and finally retired at the age of 71, although she was still involved with a variety of projects until her death. During her lifetime she accomplished a great deal of research; her work followed three distinct themes: marine biology, ecology, and taxonomy (the system of botanical classification).

It has been said that Lucy Moore's greatest scientific contribution is probably her taxonomic work on New Zealand native plant species. She described many new species and made major contributions to the *Flora of New Zealand* Volumes 1 & 2. One of her "retirement" projects was writing *The Oxford Book of New Zealand Plants*, illustrated by Bruce Irwin.

During her lifetime Lucy Moore received many honours for her contribution to science including, in 1947, a Fellowship of the Royal Society of New Zealand, and an MBE in 1959. She was very modest about her achievements. Lucy Moore was enthusiastic about education and about developing a knowledge of botany, particularly amongst children with whom she spent a great deal of time in the cause of



**Lucy Moore**

expanding botanical knowledge and understanding.

The National Trust is proud to be the major beneficiary of the Lucy Moore bequest. It will enable the Trust to expand and continue in its efforts to provide, protect and enhance open space for the benefit of the people of New Zealand.

The National Trust wishes to recognise the life and work of Lucy Moore in a practical way and is developing projects which reflect her interests in education and conservation. Further details will be announced during 1990.

# Open Space Covenants

**B**y the November 1989 Board Meeting 386 covenants had been registered while a further 363 were approved and proceeding toward registration.

## RECENTLY REGISTERED OPEN SPACE COVENANTS

### NORTHLAND DISTRICT

1. **NATIVE FOREST RESTORATION TRUST.** Near Donnelly's Crossing. The Native Forest Restoration Trust purchased the McGregor Block to secure its protection in perpetuity, particularly for its wildlife value. A covenant has now been placed over the 318.40 ha area of bush which adjoins the southern boundary of the Waipoua Forest Park. The National Trust also made a substantial financial contribution to the purchase of the reserve. Part of the block was previously destined for pine forestry. The reserve contains many fine trees and dramatic views into the forest park. Dominant species include kahikatea, kauri, taraire, kohekohe, rimu, totara, mahoe and lacebark. Birdlife includes kokako, kiwi, fantail, fernbird and kaka; bats are also present.

### AUCKLAND DISTRICT

2. **WRIGHT EE.** Tenders Road, 3km west of Dairy Flat. A bush covered valley of 4.65 ha has been protected by covenant. It runs parallel to Tenders Road and contains some fine kauri and rimu.

### WAIKATO/BAY OF PLENTY DISTRICT

3. **KELLY D & TP.** Corner of Gorge

Road and Valley Road, Whakatane. In order to enhance the backdrop to Whakatane, the owners have covenanted a 3.39 ha steep, grazed hillside behind the town and are revegetating it with the help of a number of local groups. The District Council has already successfully established natives at the foot of slope. Once revegetated this area will tie together all of Whakatane's existing backdrop reserves.

4. **GRIERSON J.** Work Road, near Katikati. A large gully system containing some very large trees has been protected. The 3.93 ha covenant area borders the Wainui River Scenic Reserve and contains tall rata and tawa with many young rimu. The surrounds of the bush are kanuka and rewarewa.



**Easterly view from Alspach covenant towards the Waiaua Reserve.**

### GISBORNE DISTRICT

5. **ALSPACH J&J.** "Tablelands", Opotiki. A 14.24 ha forest remnant has been protected south of Opotiki. The remnant is representative of the forest type which originally covered the lower terraces near the river flats near Opotiki; subsequently much of it

has been put into farmland. The covenant area contains some spectacular puriri trees as well as many other species including rimu, tanekaha, kahikatea, miro, titoki, wineberry and tawa.

6. **BAYLEY BM.** Waimata Valley, Gisborne.  
A covenant now protects 11.18 ha of bush on steep hill country 53 km north of Gisborne. Approximately half the area was burnt off many years ago and is now predominantly rewarewa with a thick understorey of fern and supplejack as well as seedling native trees. The remainder of the covenant area has never been modified and contains many tawa, rimu, matai, whiteywood and tree ferns. There is also a huge pukatea tree which is thought to be one of the largest in Poverty Bay.

7. **DEVINE WL & EP, RD 2, Te Karaka.** Situated at Te Karaka, 50 km north of Gisborne, this property contains two covenanted areas totalling 8.64 ha. One area is predominantly tawa on a very steep mudstone bluff which supports large numbers of native pigeons. The other area contains an uncut bush remnant and two adjacent small swamps. This very attractive area has a large range of species with abundant birdlife.

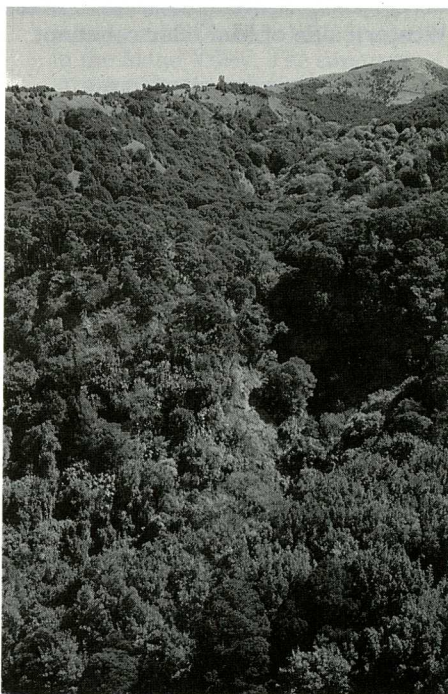
8. **STEPHENS NC & SJ.** Ohuka Settlement near Wairoa.  
A covenant protects 4.53 ha of bush and a steep southerly hillside above the Ouratipoki Stream. This isolated, attractive area contains a wide range of species including totara, kahikatea, tawa, titoki, ngaio, rewarewa and mahoe.

### TARANAKI DISTRICT

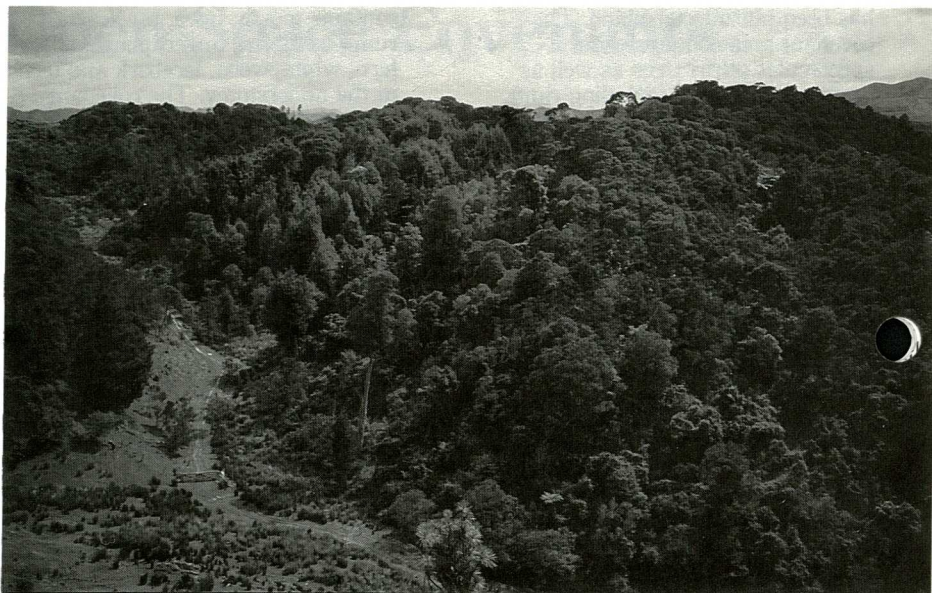
9. **AH JACKSON TRUST.** Stanley Street, near Midhurst.  
A covenant has been placed on 27 ha of bush on hill country. This area lies adjacent to a small scenic reserve and

contains mostly tawa, rewarewa, rimu, miro, five finger, ponga, silver fern, whiteywood, lacebark and ferns in the understorey. The covenant represents one of the largest bush areas in the Stratford district and supports many native birds including pigeons, morepork, tui, bellbird, warbler and kiwi.

10. **ROYAL FOREST & BIRD PROTECTION SOCIETY.** Lepperton Bush, Lepperton, north of Inglewood, Taranaki  
The North Taranaki branch of the Royal Forest & Bird Protection Society initiated the permanent protection of Lepperton Bush. The society purchased the 4.91 ha bush area with financial assistance from the National Trust, and a covenant was placed over it. The area is a



**Steep gully on the southern boundary of Devine covenant.**



**Western side of McKellar covenant**

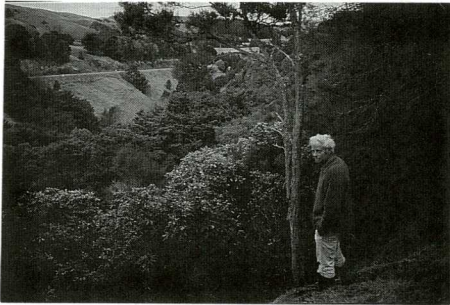
semi-coastal remnant of forest containing two types of forest; kohekohe on the dry hill top and tawa on the lower slopes. Other canopy trees include pukatea, titoki and rewarewa. The roadside bush is a very significant feature of the local landscape.

#### **WANGANUI DISTRICT**

11. **WICKHAM DM.** Parakino, Wanganui. Located near Wanganui this 5.1 ha bush covenant area is dominated by tawa (including some very large specimens) and a range of other species such as pukatea, miro, whiteywood, kahikatea, lancewood and five finger. A small lake alongside the bush provides a refuge for wildlife.
12. **RIVERTON TRUST.** (LE Cranstone), Kaungaroa, near Wanganui. Located alongside the Fordell Maungamahu Road, the 11.93 ha bush is protected by covenant. It contains a wide range of species with many fine specimens of rimu, kahikatea, maire and pukatea. Bird life is plentiful with tui, bellbird, pigeon, morepork, fantail and grey warbler.
13. **DRAPER CS & JA.** Pahiatua Road, Pongaroa. Two blocks of regenerating bush totalling 13.5 ha have been protected on this hill country property. One block has many large specimen trees including rimu, kahikatea, matai, tawa, titoki, kowhai and totara. The other block has fewer large trees but is regenerating well.
14. **McKELLAR FARMLANDS.** (HC McKellar) Omango Road, Hunterville. Some 44 ha of bush have been protected; this is the owner's second covenant. The covenant comprises three areas of bush which is dominated by tawa with a variety of other species including rewarewa, kahikatea, pukatea, titoki, hinau and lancewood. Bird life is abundant.

**MANAWATU/WAIRARAPA DISTRICT**

15. **SPRING ROCK TRUST (WA & BM Cameron)** Longbush Road, 15 km north of Martinborough. A covenant protects 3.8 ha of bush on both sides of the Whangaehu Stream and is adjacent to two other covenants (Oliver and Lawrence) in an area which does not have any formal reserves. Totara is the dominant species with kanuka, kahikatea, kowhai, lacebark, five finger, rangiora and rewarewa. The bush is located alongside the Longbush — Martinborough Road adding significantly to the landscape qualities of the local area.



**Mr Cameron beside his bush.**

- PARKER MR & E.** Spring Grove, Longbush Road. Bush at the end of Longbush Road on a steep southerly face has been protected. The 4.64 ha covenant area is very prominent from the Martinborough-Gladstone Road and contains ngaio, rewarewa, lancewood, lemonwood, kanuka, pigeonwood and other species. Some of the lemonwood and kanuka specimens are particularly large.

17. **Wilson AQ & MD.** Wilson's Road, Sanson. Two bush areas totalling 16.24 ha

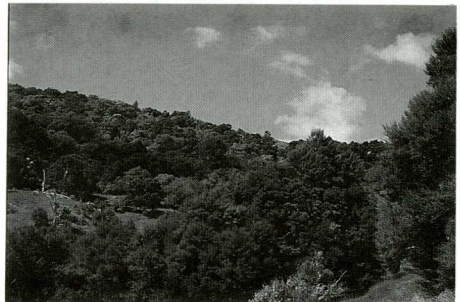
have been protected by covenant. One small area is adjacent to an area already covenanted by Mr J Wilson and completes the protection of a whole gully. The other, a much larger area, contains totara bush.

18. **FRANCIS EG & KA.** Konini, south of Pahiatua. 1.31 ha of bush has been covenanted; it is easily seen from SH 2 and Tutaekara Road. Part of the bush has a dense canopy; the remainder is open and more park-like in appearance. The main species are tawa, titoki, kowhai, kahikatea, matai, rewarewa and whiteywood.

**NELSON / WEST COAST DISTRICT**

19. **JOHNSTON PR & RJ.** Matai Valley, Nelson.

A small but significant bush clad hillside of 0.61 ha has been protected in the Matai Valley. The covenant area contains a range of species including hard beech, titoki, putaputaweta, whiteywood, wineberry, kahikatea and many ferns. A large portion of the bush is intact but some of the undergrowth was damaged by fire in 1981. The bush adjoins and overhangs the Matai Valley Road for some distance.



**Parker covenant viewed from South.**

20. STEPHENS JM. Fairdown Beach, Westport.  
Three areas totalling 13.33 ha have been protected by a covenant. Two areas are predominantly bush; one also contains wetland and flax. The third area is lagoon, around which wide margins have been left within the covenant area to allow planting for the protection of ducks and wildlife. There is a small covenant on the neighbouring Cunliffe property.

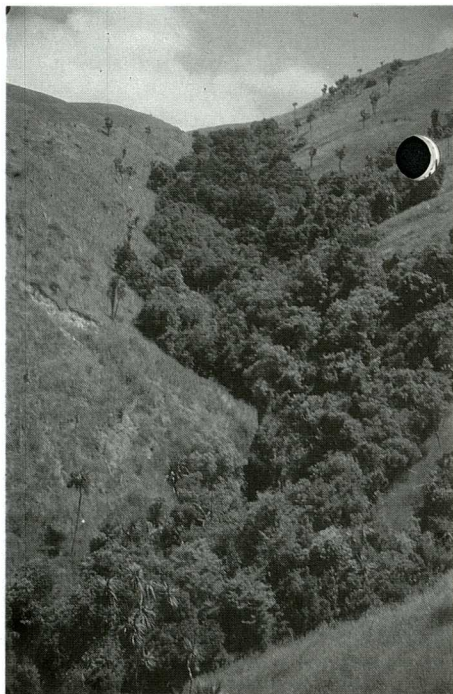
### CANTERBURY DISTRICT

21. FIELD SJ & P. 'Blythe Downs', Cheviot, RD 3.  
A covenant has been placed over a significant 4 ha bush remnant in the Blythe Valley. The bush lies in the v-shaped arms of two steep gullies and is dominated by totara in association with mahoe, lancewood, coprosma, ribbonwood and kowhai. This remnant is thought to be the only one of its kind in the district.
22. WILDING DM. 'Landsdowne', Conway Flat, North Canterbury.  
A substantial part of the Big Bush Gully at Conway Flat has been protected by covenant. The 28 ha area forms an attractive part of the landscape and is easily seen from the road. The remnant includes nothofagus species as well as matai, kahikatea, giant manuka, tree ferns, broadleaf, fivefinger, kowhai and pittosporum.

### SOUTHLAND DISTRICT

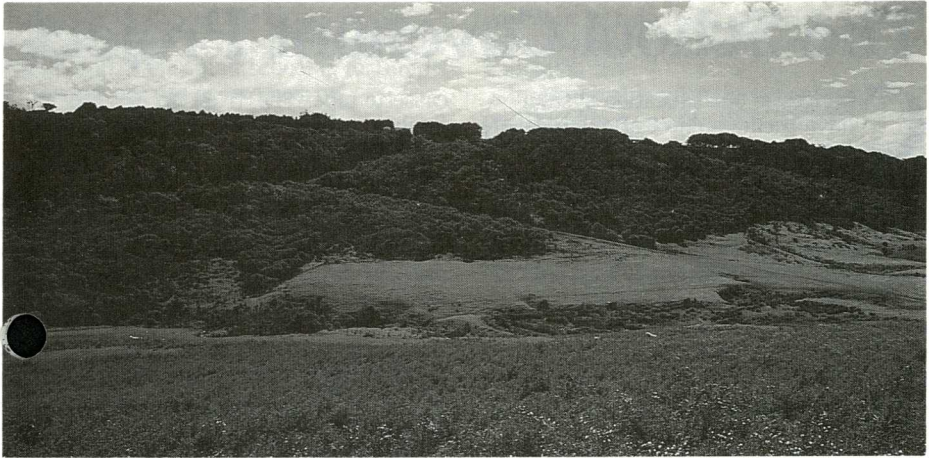
23. BUCKINGHAM KJ & MF.  
Fortification, No 1 RD, Wyndham.  
Three forest remnant areas on hill country, totalling 16.26 ha, have been covenanted. One large area is on a shaded south facing slope adjacent to the farm homestead and is dissected by a meandering and largely unmodified stream. Two smaller areas adjoin a large neighbouring forested area. The vegetation is dominated by kamahi and fuchsia with some podocarps in the two

smaller areas. Other species include red matipo, pittosporum, wineberry, putaputaweta, pepperwood, fivefinger, broadleaf, cabbage tree and a variety of ferns. Native birdlife is plentiful.



Field covenant

24. HORTON OW & PM. Grove Bush, No 6 RD, Invercargill.  
A covenant protects a small native forest remnant near the east bank of the Makarewa river channel. The 2.2ha area contains kahikatea and pokaka as well as some matai, broadleaf, putaputaweta and pittosporum. The bush forms an important part of the landscape as seen from the main Grove Bush — Woodlands road.



**Central portion of Buckingham covenant**

25. SOUTHLAND AREA HEALTH BOARD. Kew Hospital, South Invercargill City.

A very significant forest remnant on the boundary of Invercargill's Kew Hospital has been protected by a covenant. The 3.1 ha area is one of the two remaining native forest remnants in the once well forested Invercargill City. Kahikatea is the dominant species but rimu and matai

are prevalent. The understorey is mainly pate and red matipo as well as ferns. The bush is a useful wildlife habitat especially for nesting herons. The area also contains a small picnic area with facilities and a well-formed circular walking track, suitable for wheel chairs. Thus, apart from its ecological values the bush provides recreational and therapeutic values for hospital staff and patients.



**Interior view of Southland Area Health Board covenant showing track.**

# The School Covenant Project

Changes to our education system have been a subject of much debate over the past year and so it is timely to provide an update on the School Covenant Project.

This project was established several years ago by the National Trust in recognition of the continuing need for environmental and conservation education. It links a school with a nearby covenant area to form a local education project. As well as providing a school with a local natural resource which can be used for a wide range of curriculum studies, the scheme enables covenant owners to share their protected land with the pupils. The project aims to stimulate pupils interest in the vegetation, wildlife and landscape features in their own district.

The project has been operating most strongly in the Waikato — King Country region; it has also been established in Nelson and Southland and is currently being introduced to Northland, Gisborne-East Coast, Canterbury and Otago. The Trust expects to have it operating in all regions within the next few years. There are mostly primary schools participating as secondary schools have more timetable restrictions; however some area schools are involved.

School science advisers have been instrumental in the establishment and operation of the project and Trust regional representatives have been very closely involved.

Some schools have developed revegetation projects in response to their school covenant activities. Art and craft work is also a popular spin off.

To assist schools a general starter kit has been compiled. It contains a manual which has a large section of resource material for teachers, prepared by Waikato Science Adviser John Mathieson. The kit also includes a photograph set, field guides for native shrubs and trees, a revegetation manual and a New Zealand birdsong

cassette tape. The Trust is currently finalising these kits so that they will be available to schools in the first term of 1990.

Additionally, an information sheet about the project for landowners and school staff has been produced. This can be obtained from regional representatives and the Trust office in Wellington.



**Te Kowhai School pupils with John Charteris, Science Adviser, observing birdlife at the Hodge covenant near Frankton.**

In general, project activities have been slower over this past year due to the transition to a new education administration system. Individual schools have been very busy during the reorganisation and with the disestablishment of education boards, science advisers are now employed by teachers colleges.

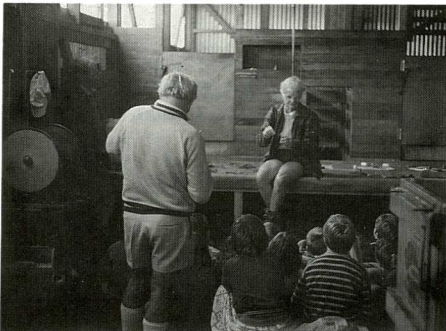
The following examples illustrate how two schools in the Waikato — King Country region have enthusiastically approached their school covenant projects.

## Roto-o-rangi School

Roto-o-rangi School, located south of Cambridge, was part of the original pilot programme and has continued to actively participate in the original pilot programme

under the guidance of principal Neville Kerr and School Science Adviser John Mathieson. This small school is fortunate in having the use of two nearby covenants, south of Cambridge.

Bill Garland has been an enthusiastic supporter of the project and has allowed Roto-o-rangi School to visit his bush covenant and use his woolshed on occasions for overnight stays and classroom work. The school is in the process of establishing a link with a school in England (with interests in conservation). This led to the pupils taking part in a field day at the Garland bush where they identified and listed plants and birds inhabiting the area with the assistance of local experts. Photos of the bush and landscape were taken; information will be exchanged with the school in England.



**Milton botanist, Mary Skinner, talking to pupils about ferns in the Garland Woolshed.**

The school also visits the Garrett covenant which was one of the first areas to be protected by the National Trust. It was initiated by the late Micheal Garrett and comprises 6.3 hectares of large old kahikatea trees with valuable timber. This year the bush has been mainly used for art work by the pupils. Rosemary Woodward, a local resident who is currently working on an extra-mural art degree has accompanied the pupils to the

covenant to help them appreciate and draw the line, form and beauty of the kahikatea tree.

In March this year the school held an opening ceremony for Wahi Okioki o Roto-o-rangi. This is a roadside rest area located near the school which has been cleared of blackberry and replanted by the school pupils. Many of the seedlings planted came from seeds collected in the Garland and Garrett covenant areas and were grown by the pupils.

## Waikaretu School and the Woodward's Covenant

An association between Waikaretu School, the National Trust and the bush covenant on the property of Philip and Ann Woodward began in early 1988. Visits by the school to the bush followed later that year under the guidance of principal Martin Turner. His enthusiasm for using the area as an outdoor classroom has since encouraged its full use and also led to the enhancement of the area with plantings of native species and the establishment of a picnic and rest area within it.

Located on the west side of the Waikareto to Port Waikato road, this bush covenant was registered in 1986 and comprises 2.9 ha of tall forest. It is an area of importance for reasons other than ecological ones. In the past it was an important Maori burial place; and it is important to cavers as it contains the entrance to a vast underground caving system.

A visit into the caves introduces the novice caver to absolute darkness where only glow worms light the way, and to great cathedral like areas full of stalactites and stalagmites. A stream flows through the whole system.

Its use as a burial place was because the stratified limestone cliffs (which surround the entrance to the caves)

provided natural ledges, high up, on which the dead could be comfortably laid in a very secure environment. Nearly all the limestone cliffs and caving systems along the Waikaretu coast were used in this manner by Maori families. It was only when legislation was passed in the late nineteenth century which insisted on underground burial that these places were no longer used.

Because of the significance of the area the then Trust Chairman Les Gandar, Trust Executive Officer Ben Thorpe and Stuart Chambers, Regional Representative visited the site. They met with the Woodwards and two local Maori, Sam Karaka and his uncle Charlie Karaka, whose ancestors were laid to rest in the burial ground.

This meeting allowed the Trust to meet local Maori people and to learn of the early burial customs and about the early Maori lifestyles in the Waikaretu district. Part of the meeting took place at the burial site where Sam and Charlie Karaka entered and made peace with their ancestors and then invited the others present to say prayers among the wonderful setting of native forest and the old limestone caves and ledges.

Sam Karaka invited the Trust to use the area for the school pupils and he welcomed the cavers to continue using the area as well as saying that the Trust's continuing interest in the area was very welcome.

This cordiality between the Karaka family and the Trust led to a proposal to link the area with Waikaretu School. However after further consideration it was decided that another area of protected bush on the Woodward's property (on the east side of Waikaretu Road next to the roadside) would be more suited to school activities.

This area is bordered by the Waikaretu Stream which is crossed by stepping stones. Once into the covenant a grassed area is reached. An offroad rest area has been established here and a table and chairs provided for travellers. The area has been planted in natives by the school

pupils who also grew some of the plants with the remainder being donated by the Waikaretu School Committee.



**Netting fenced observation area in the Woodward's bush.**

Raglan County has provided a good off road parking area for visitors and travellers and has also signposted the area with a rest area sign.

An informal path through the bush leads into coastal type forest of kohekohe, nikau, tawa with rewarewa and pukeatua and a good mixture of ferns. The walkway also passes some interesting limestone cliffs and rocks before reaching a high spot above the river.

Within the forest, Neil Utting, school science adviser, has assisted with the building of areas enclosed by wire netting as observation plots for the pupils to watch and report on. The close proximity of the river also extends the educational potential of the covenant site.

Everyone involved is now waiting to see the results of the planting efforts. Due to the enthusiasm of the Woodwards and Martin Turner as well as the handy location this promises to be a very well used covenant area.

*School covenant articles supplied by Stuart Chambers, Waikato Regional Representative.*

# Revised Legislation

In 1988 the Board of Directors decided that a review of the Queen Elizabeth II National Trust Act 1977, and its various amendments, was necessary. This was to take account of the Trust's current and forecast level of activity, and the need to streamline our administration.

Major points proposed in the change included reduction in the size of the Board from ten to six members, with the Chair and three directors appointed by the Minister of Conservation, and two directors elected by members (as at present).

The appointment of the three appointed directors will follow a public invitation for

nominations from interested agencies, having regard to environmental and conservation values, the interests of rural landowners, and the interests of the Maori community. Other proposed amendments are consequential to changes in the Board (eg. change in the size of quorum), and other essentially machinery matters.

One of the claims the Trust can make with good reason is the cost-effective use of the conservation dollar in protecting open space. Changes in legislation affecting Board structure help reduce expenditure, and yet continue to allow for a range of representative interests on the Board of Directors.

# Two More Arboreta

To most of our members the word arboretum brings to mind Eastwood Hill, the magnificent collection of exotics situated in the hills behind Gisborne.

But there are smaller — indeed in some cases tiny — arboreta in other parts of the country.

The H E Hart Pinetum at Lake Coleridge was started by the late Mr Hart in the 1930s when he was superintendent of the power station. He raised hundreds of coniferous trees and shrubs from seed

and planted them on the slopes above the electricity settlement.

The Te Wera Arboretum, east of Stratford, was developed by the former Forest Service and contains some 4 hectares of exotic trees including European species and Eucalypts.

In both cases the National Trust is maintaining a watching brief on the long term protection of these two blocks, although local branches of the Farm Forestry Association are well aware of their presence and are actively involved in their preservation and restoration.

# Regional Representatives Meeting

The National Trust's nine regional representatives met in Wellington over 26 and 27 October 1989. It was timely to combine the representatives visit for the Government House function with their annual meeting.

These annual meetings are important as they enable representatives to share ideas, have direct communication with the Wellington staff and to be informed on what is happening in regions throughout the country.

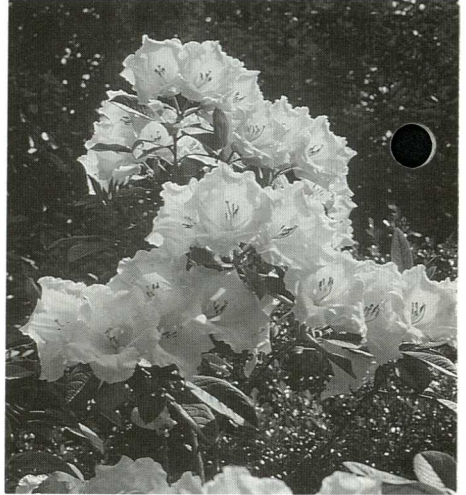
# Taranaki Gardens News

## Rhododendron Festival

**T**he Taranaki Rhododendron Festival was established last year as an annual event; this year it ran from November 3 - 12. The Trust Garden Manager, Alistair Duncan reported that the festival has been an unqualified success. Taranaki turned on brilliant weather and visitors poured into the region from all over the country and from overseas.

As well as visiting the three large gardens, Pukeiti Rhododendron Trust, Tupare and Hollards people had the opportunity to see a number of smaller, private gardens that were open to the public on particular days of the festival.

Several thousand people came to see Tupare and Hollard Gardens which were in superb condition for the festival. Numerous tour groups were among the visitors including ones from the USA and Australia. Television New Zealand also filmed the gardens for next year's series of Holiday.



**Rhododendron nuttalli x lindleyi,  
Hollard Gardens.**



**Rhododendron macabeaenum, Hollard Gardens.**

## Gardens Concession Ticket

During the past year a concession ticket for entry to Tupare, Hollard and Pukeiti has been used. Tickets costing \$10.00 for entry to the three gardens have proved to

be very popular and are available from the gardens, the New Plymouth Public Relations Office and Tourism Taranaki (PO Box 56 New Plymouth).

## Garden Staff

Alistair Duncan, Gardens Manager, is assisted by a small dedicated team who help to maintain the gardens to a very high standard.

At Tupare, Donna Christiansen, a qualified gardener, works full time together with George Mann who provides part time assistance. Donna has been at Tupare for the past 18 months while

George has been associated with the garden since it was owned by Sir Russell and Lady Matthews.

Hollard Gardens is staffed by two people who have recently joined the Trust: Greg Rine, a qualified gardener is employed full time and Ray Hope, experienced in landscape work and practical gardening, works part time.

# Indigenous Forest Policy

The National Trust presented a submission to the Ministry for the Environment in response to the Discussion Paper on this subject. Key points from the submission included:

1. The National Trust believes that the principles of voluntary protection should become the cornerstone of policy for indigenous forest protection.
2. There exists amongst many private landholders a distrust of imposed planning restrictions which impinge upon property rights, the costs of which fall on the landholder.
3. There is a growing awareness of the inadequacy of imposed solutions to bring about long term conservation of features on private land and associated loss of landholder goodwill.
4. There is a perceived need for commercial use of some of the indigenous resources on a sustainable management basis.
5. There is a poor understanding generally, reflected in the Discussion Document, of the necessity of long term management to ensure the conservation of much indigenous forest. This is especially true of the very valuable lowland forest remnants the protection of which inevitably relies on the goodwill of landholders.
6. Greater recognition needs to be given to the significance of smaller forest remnants throughout lowland New Zealand. They have an important role in creating a public awareness of indigenous forest protection, as well as in themselves as remnants in a working landscape.
7. There is a need for information defining the priorities for protection of indigenous forests (PNA survey or similar).
8. Amongst many private landholders

there exists a considerable willingness to protect indigenous forest voluntarily.

9. There should be a range of organisations and protective mechanisms available which reflect the diversity of landholders. Nga Whenua Rahui, a trust controlled by the Maori people for Maori land, matches this concept.
10. The National Trust believes the role of a trustee as a protecting agency is a powerful one.
11. The National Trust believes that it is essential that a framework is created which fosters the development of a partnership between private landholders and the state in conserving indigenous forests. Rate relief/exemption is a very important part of this policy, as is recognition of the contribution by the stewardship role of landholders.
12. There is a case for compensation to



be paid when an established business is financially affected by a change in policy. The justification for this lies in the economic returns from conservation exceeding the returns from exploitation, in presenting the conservation/protection cause as one which respects market as well as other values, and in the principles of natural justice.

## Membership Changes

**A**t the August 1989 Board meeting, it was decided that the Trust should offer Honorary Covenant Membership to the new owners of existing covenants, this membership to be renewed annually for the duration of the ownership of the covenant, with voting rights as for covenantors. Owners will be invited to subscribe to Trust membership

if they wish.

This resolves the longstanding anomaly in which the new owners of covenants, who still maintain the stewardship of a protected area on their property, were not recognised for this contribution to protection in the same way as the original owners. The Trust now awaits the required statutory approval for this move.

## Endowment Life Membership

**W**hile there is provision in membership rules for Life Members, there have been indications that some people would like to make a rather greater contribution to the National Trust over a period of years.

Endowment Life Membership has now

been established, by which individuals can give \$333 a year for three years. Just as in other aspects of life there are different means of meeting people's needs, so it is with membership — and so we have responded to a perceived need.

# Share Your Forest Management Experiences

**T**he National Trust is interested in hearing from landowners who have been involved in actively managing their forest and shrub remnants.

Legal protection by way of a National Trust Open Space Covenant and physical protection by fencing are significant steps in the conservation of forest remnants.

However, because many remnants are small, or have been considerably modified in the past or are surrounded by different land uses, ongoing management techniques are often required to protect natural values.

This may involve decisions about weed control, revegetation, pest control, shelter and other factors.

While the subject of managing natural areas is increasingly receiving the attention of the scientific community, a real pool of knowledge lies with those with practical experience.

The Trust often receives requests from landowners for advice and information on aspects of forest remnant management and frankly we don't always know the answers. By establishing a pool of knowledge and information we will be better placed to assist others.

So, if you have had any experience in the management of forest or scrub remnants, please share them with us.

For example, how you deal with specific weed problems, what species did you decide to use for revegetation, how did you obtain the plants, what species did best in your location. Unsuccessful techniques as well as the successes would be useful to build the total picture.

Simply document your experiences in your own format or, if you prefer, write to us for a questionnaire to guide your answers. Please address your responses or requests for questionnaire to : The General Manager, Queen Elizabeth II National Trust, P O Box 3341, Wellington

## Postscript: Dunn's Covenant

**T**his was the subject of an article in the September 1989 newsletter (page 18). What we didn't mention was the ongoing fencing work being done by Mr and Mrs Dunn to protect the second forest area. To assist the owners the Mid-North branch of the Royal Forest and Bird Protection Society circulated an

appeal to their members for funds towards this work.

The Trust always welcomes contributions to the protection of open space, either as donations to be invested for the general work of the Trust, or to be used directly for specified projects such as regionally important covenants.

## Note For Covenant Owners

**O**ne of the formalities of having a covenant on your property is the need to tell the National Trust when there is a change of ownership (Clause 16 of the Agreement).

In the busy times of shifting between

houses or farms it is easy to overlook this. To the Trust it is important so that our Regional Representative can call to see the new owners — so please try to remember to let the Representative know prior to your shifting off the property.

# Queen Elizabeth II National Trust Board February 1990

Appointed by the Minister of Conservation after consultation with the organisations noted:

## CHAIRMAN

**Sir Peter Elworthy** of Timaru

## DIRECTORS

**Rei Bailey** of Wanganui.  
NZ Maori Council

**Hamish Ensor** of Methven.  
Federated Farmers of NZ

**Ken Macdonald** of Whakatane.  
Federated Farmers of NZ

**Margaret Mortimer** of Frankton.

**Jennifer Seddon QSM** of Tauranga.  
Appointed by the Minister

**Marilyn Waring** of Wellsford.  
Appointed by the Minister

**Elected by National Trust Members:**

**Arthur Cowan** MBE of Otorohanga.

**Dr Brian Molloy** of Christchurch

**General Manager:**

Euan McQueen

## Regional Representatives February 1990

### NORTHLAND

**Fenton Hamlin**  
Attunga Ridge  
RD 1, Tangiteroria  
Northland  
Tel: (0884) 5315

### GISBORNE

**Richard White**  
14 Seymour Road  
Gisborne  
Tel: (079) 88 269 Home  
(079) 82 119 Work

### CANTERBURY

**Graham Dunbar**  
19 Hadlow Place  
Christchurch 8004  
Tel: (03) 588 278

### AUCKLAND

**Walter Willis**  
10 First Avenue  
Stanley Point  
Auckland  
Tel: (09) 453 595

### MANAWATU/HAWKES BAY/ NORTH WAIRARAPA

**Eddie Suckling**  
8 Wikiriwhi Crescent  
Palmerston North  
Tel: (063) 75 729

### OTAGO

**Ian Williamson**  
32 McKenzie Drive  
Twizel  
Tel: (05620) 595

### WAIKATO/BAY OF PLENTY

**Stuart Chambers**  
649 River Road  
Hamilton  
Tel: (071) 559 939

### NELSON/MARLBOROUGH

**Martin Conway**  
Palmers Road  
RD, Brightwater  
Nelson  
Tel: (054) 23 712

### SOUTHLAND

**Roger Sutton**  
16 Vogel Street  
Invercargill  
Tel: (021) 57 810

Wellington area is looked after from Head Office of the Trust.

*Published by:*

Queen Elizabeth the Second National Trust, PO Box 3341, Wellington.  
Colenso House, 138 The Terrace, Wellington. Telephone (04) 726-626

Registered at PO Headquarters Wellington as a Newsletter.