



Queen Elizabeth II

National Trust

newsletter

NO. 13 SUMMER 1986-7

The Trust and Environmental Reorganisation

The Trust's future is assured in the new arrangements for environmental administration. Trust Chairman Mr Gandar and Manager Dr Edmonds met with the Minister of Conservation, Russell Marshall, and the Director-General of the Department of Conservation, Mr Ken Piddington (formerly the Commission for the Environment's representative on the Trust's Board). They were reassured that the Trust's role will continue with the support of the new department. At the meeting, the Trust's financial projections were presented to the Minister and both he and Mr Piddington were keen to see the Trust increase its activities.

The financial projections resulted from a detailed evaluation of the Trust's work record and potential. For the first time, the real costs of Trust activities, covenanting, property management, and administration can be seen. In the past, government funding has not been based on such detailed analysis and projections.

As from 1 April 1987 the result of the government's reorganisation of environmental administration in New

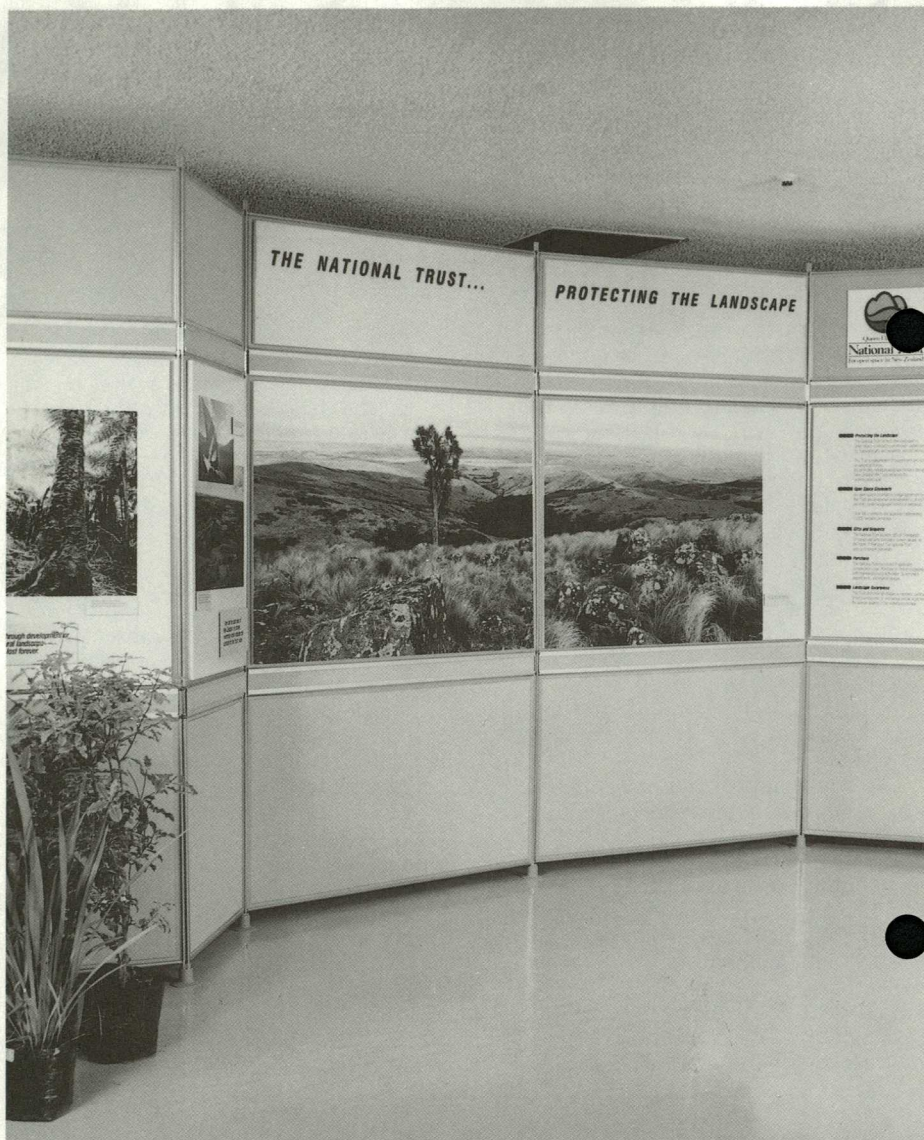
Zealand sees a new range of government departments and agencies. The Department of Lands & Survey will be disestablished, along with the Forest Service and the Wildlife Service. In their place there will be a Department of Conservation, a Ministry of Forestry, a Ministry of the Environment, and a Department of Survey and Land Information. There will also be two state owned enterprises, Land Corporation and Forestry Corporation. These will be commercially oriented.

DOC brings together the conservation functions previously distributed among various departments. This primarily involves natural area and species protection, but importantly will also include advocacy of conservation. This is an historical precedent, the first time that a government department in New Zealand has been given the formal responsibility for advocacy. The new department will service both the Queen Elizabeth the Second National Trust and the New Zealand Historic Places Trust.

It is heartening to begin a new era in environmental organisation with such support from the new department. The Department of Conservation has the

IN THIS ISSUE

The Trust and Environmental Reorganisation	1	BNZ Site Update	8
Trust Manager Appointed to DOC	3	Maunganui-tea-o	8
Second National Trust Lecture	4	New Regional Representative	9
Lake Wainamū	5	Changes and Activities	10
Pouawa Sandhills	7	Open Space Covenants	14



statutory responsibility to advocate conservation in New Zealand and the Trusts' part in this is expected to be of great help to the department. The Trust will continue to provide cost effective protection of private land, as a non governmental organisation servicing the private landowner.

National Trust Display at the Second Trust lecture. Photo: Tony Squares.

Trust members will be pleased to know that notwithstanding the uncertainties of environmental reorganisation, the Trust has emerged with clear and well-supported aims.

Trust Manager Appointed to DOC

Trust Manager Dr Alan Edmonds has been appointed deputy director-general (science and advocacy) in the Department of Conservation. This is one of three deputy-director general positions, working with director-general Ken Piddington. Alan Edmonds first worked with the Trust as visiting scientist from the University of Waikato. He was appointed Manager in July 1985, filling a position that had been vacant since the death of the first manager, Lloyd White.

Dr Edmonds made a substantial contribution to the Trust's direction, achievements and effectiveness. Under his management the Trust has become more efficient and productive, in particular processing open space covenants at an increasing rate.

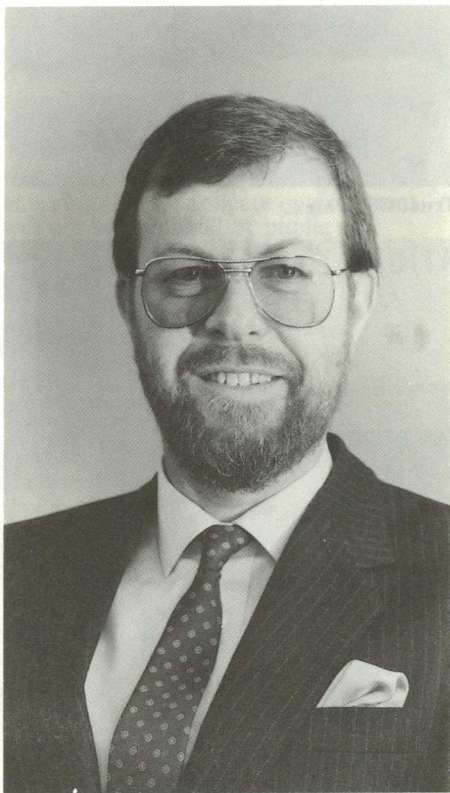
It has also become involved in new areas of open space awareness and protection. For instance, Dr Edmonds coordinated and encouraged the Trust's involvement with the protection of urban open space at the old BNZ site in central Wellington. He also encouraged the Trust's role in landscape conservation generally.

Dr Edmond's botanical and ecological knowledge and awareness increased the Trust's credibility within New Zealand scientific and botanical circles.

The Trust also has benefitted greatly from Alan Edmond's wide range of contacts throughout the country. These included contacts through his work as a scientist and teacher, and also his involvement as President of the Royal Forest & Bird Protection Society. In particular, the Trust is fortunate that Dr Edmonds was an effective political lobbyist for the Trust's role in the protection of private land.

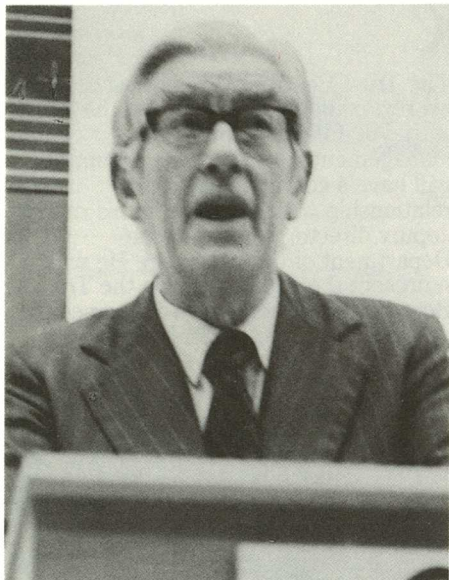
Alan Edmonds came to the Trust at a time when it was beginning to expand its range of activities and he provided a focus and sound organisational basis.

The Trust Board of Directors accepted his resignation regretfully and the Trust staff will miss his supportive management. However, Dr Edmonds will have a continuing working relationship with the Trust in his role as deputy director-general of the Department of Conservation. He will represent the department on the Trust's Board of Directors, and will oversee the department's involvement with the Trust.



Alan Edmonds Trust Manager and now Deputy Director-General of The Department of Conservation. Photo: Eric Taylor.

Second National Trust Lecture



Trust Chairman.

As members will know, the Second National Trust Lecture was held in Wellington on 19 November 1986. The National Trust lectures were established by the Trust to provide an opportunity for a distinguished contribution to be made to the public's understanding of the means and importance of protecting open space. The first lecture was *The Law Relating to Natural Water: Protection and Management*, delivered by David Williams, an Auckland Environmental lawyer.

The second lecture called *Planning Strategies for Nature Conservation* was delivered by Dr Graeme Campbell, a Senior Planning Officer with the Auckland Regional Authority. Dr Campbell was the 1985 Claude McCarthy fellow, Department of Geography at the University of Auckland, is a member of the National Research Advisory Committee, and

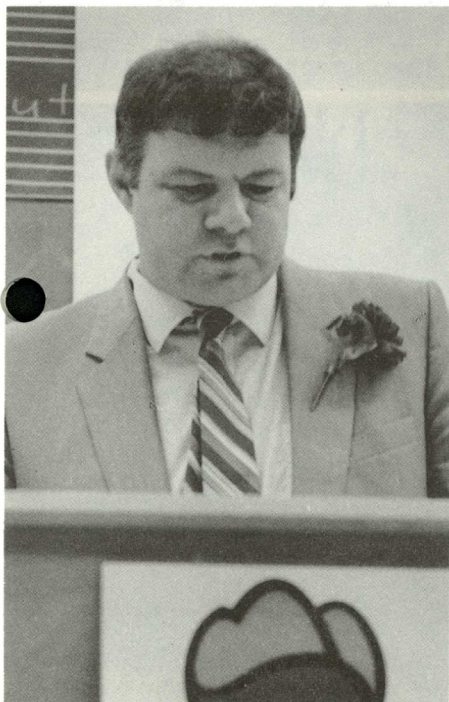


L to R: Hon L W Gandar Trust Chairman, Dr Graeme Campbell Trust lecturer, and Dr Alan Edmonds Trust Manager. Photo: Tony Squares.

Chairman of the Consultative Committee, Ecology Division, DSIR. His wide professional interests include planning for nature conservation, in particular policy development and implementation. Active in regional and district planning, particularly in Auckland, Dr Campbell has pioneered a new approach to nature conservation planning that is sensitive to environmental and community needs.

In *Planning Strategies for Nature Conservation*, Dr Campbell discussed ways of planning for wise land use and protection of New Zealand's natural environment. His topic is of particular public interest because of the present environmental reorganisation and current awareness of the importance of ensuring the future of our natural heritage.

The lecture is being published by the Trust and will be distributed to all members.



Dr Graeme Campbell.

Lake Wainamu

In September of last year Trust Chairman Hon L W Gandar officially handed over the management of Lake Wainamu to the Auckland Regional Authority. Lake Wainamu Scenic Reserve is at Te Henga (Bethells Beach) on the West Coast of Auckland. The reserve was bought by the Trust in 1980 with contributions from the ARA, the Waitemata City Council, Lands & Survey, and the Waitakere's Protection Society.

Lake Wainamu itself is the largest fresh water swimming lake available to the public near Auckland. It is surrounded by 155 hectares of native bush, pasture, and huge, dramatic sand dunes. Only three quarters of an hour's drive from Auckland City, the reserve is sure to become a popular recreational place.

The Trust prepared plans for managing the reserve, aimed at ensuring that its delicate environment will not be damaged by public use. Maps and signposts have been put up which will help in this. The reserve forms a significant part of the ARA's West Auckland reserve network, and a track links it with the Auckland Centennial Memorial Park. It is also near Cascade and Kauri Park, to the east, and Te Henga Park towards the sea.

At the official ceremony Trust Chairman, Mr Gandar thanked the ARA for the work it had already done in day to day matters on the reserve and particularly for their generous offer of assistance with future management. The ceremony was attended by about sixty people, including members of the organisations that were the original contributors to the reserves purchase, others such as the West Auckland Historical Society, neighbours of the reserve, and Trust and ARA staff. Speeches were made by the Trust Chairman and by Mr F C Barber, deputy Chairman of the ARA Regional Parks Committee. It was a gray and overcast day and while most people

6 QEII NATIONAL TRUST NEWSLETTER

sheltered from the wind, Trust Director Dr Juliet Batten unveiled the Lake Wainamu sign. This is a large, handsome sign carved by Derek Kerwood. It shows the Trust logo,

directions, and a map, and it provides an impressive focus at the entrance to the reserve. The sign has survived a summer without vandalism and we are hopeful this will continue.



Lake Wainamu sign by Derek Kerwood. L to R: Dr Alan Edmonds Trust Manager, Dr Juliet Batten Trust director Mr F C Barber Deputy Chairman ARA Regional Parks Committee, Hon L W Gandar Trust Chairman.

Pouawa Sandhills

The Pouawa Sandhills, six hectares of natural, undeveloped dunes, were gifted to the Trust in October 1986. The gift was made by the trustees of the late Jan Williams of Gisborne who died in the Mount Erebus tragedy in the Antarctic in 1979.

The sandhills are 19 kilometres north of Gisborne between State Highway 35 the sea, just south of the Pouawa River and where the highway turns inland. They are readily seen from the road and are a pleasant place for swimming, walking and picnicking. Camping is not permitted.

Trust Chairman, Hon L W Gandar, Trust regional representative Richard White and Property Officer Sarah De Renzy, attended a ceremony at the dunes to officially accept the gift from Mr Bill Williams, brother of the late Jan Williams. Mr Gandar welcomed the guests in Maori and paid his respects to the people of the district. He then commented on the Trust's management

philosophy for the dunes which is to keep them as far as possible in their natural state. The sum of money donated with the land would be used to maintain the sandhills as a recreational facility for the public. A management plan has been prepared by the Trust, and will be carried out by a small committee including Trust representatives. Mr Gandar's speech was followed by speeches from Gisborne MP Allan Wallbank, Mr Bill Williams, and Mr Rangi Paenga, a local representative on the committee. Wooden signs carved by Mr Derek Kerwood of Hamilton mark the site.

Pouawa sign by Derek Kerwood. L to R: Hon L W Gandar Trust Chairman, Mr Rangi Paenga Pouawa Advisory Committee member and representative of the interests of the neighbouring urupa or Maori cemetery, and Mr Bill Williams, trustee of the late Jan Williams' estate and member of the Pouawa Advisory Committee. Photo: Richard White.





Sara De Renzy Trust Property Officer and David Summersby who helped put up the Pouawa Sandhills sign. Photo: Richard White.

BNZ Site Update

The future of the old Bank of New Zealand site in central Wellington is still uncertain. In 1986 the National Trust joined individuals, mercantile houses, and other organisations to formally object to the proposed uplifting of an open space designation.

Following the Wellington City Council's decision to uplift the open space designation, the National Trust along with many of the original objectors will be appearing before a

Planning tribunal early in the year to appeal against this.

While the National Trust does not wish to see the historic buildings on the site destroyed, it wishes to ensure that the underlying zoning should remain for open space purposes in the event of the buildings being destroyed, for example by earthquake.

This is the first time that the Trust has been involved in an urban open space issue and the outcome is awaited with interest.

Maunganuioteao

The New Zealand Wildlife Service in late 1986 initiated a National Water Conservation Order to protect the upper reaches of the Maunganuioteao River. Trust members will recall that the Trust sought protection for this outstanding scenic, recreational, and ecologically important waterway under the guidance of Sir

Thaddeus McCarthy, first Trust Chairman, in 1983.

This initiative by the Trust secured interim protection for the river and the Wildlife Service is now seeking to have permanent protection applied. Trust manager Alan Edmonds attended a public meeting at Raetahi attended by over 60 people.

New Regional Representative

Murray Tapp of Tangiteroria, is the Trust's new representative in Northland. Murray Tapp farms "Paerata", a 600 hectare sheep and cattle station at Tangiteroria, 42 kms from Whangarei.

He has a strong interest in wildlife and conservation and a long association with the Wildlife Service. For over ten years he has helped the Wildlife Service in its attempts to give legal protection to wildlife habitats on private land. He has also been instrumental in the conservation of kiwis and kiwi habitats in Northland. He was one of the initiators and organisers of a voluntary group set up to rescue kiwis whose native forest habitats were threatened by conversion to pine forest. Murray has also voluntarily assisted the Wildlife Service on several field trips, including work in the South Island High Country.

Murray is a life member of the Otorohanga Zoological Society, a Councillor with the Hobson Acclimatisation Society, and is a member of other groups including the Farm Forestry Association. He will promote the National Trust in Northland down to Maungaturoto.

Murray is continuing the work of Mr Mick Philips of Paihia.

Murray will answer queries and is happy to discuss the Trust's work both



Murray Tapp new regional representative in Northland. Photo: Eric Taylor.

in Northland and throughout the country. His address is:

Paerata Station,
RD2,
TANGITERORIA.
Telephone Kirikopuni 703.

"...but from now on the farmer will have to accept a new world in which it is his stewardship of the countryside the taxpayer wants, at least as much as the cheap food."

From an editorial in *The Times* (UK),
February 1987.

Another Waikato Covenant

Trust regional representative Stuart Chambers is also known as a journalist specialising in agricultural and nature conservation matters, particularly bird watching. He keeps Waikato papers supplied with articles about Trust covenants. One such is the Harker Reserve, on the Onewhero Road, a kilometre from the Tuakau Bridge over the Waikato River. The public are encouraged to enjoy the Harker Reserve, protected by a registered covenant and marked by a large sign contributed by the Raglan County Council. The Raglan County Council was involved from the beginning in protecting the bush with a Trust covenant thanks to Councillor and farmer Jack Mitchell. Jack Mitchell's farm is close to the reserve and he

suggested to Rowan and Elaine Harker who own the bush filled gully that they think about protecting it with the Trust's help. The Harkers and the Trust agreed on putting a covenant over the bush and the Trust contributed to the cost of a two kilometre electric fence. This was done through a PEP gang of fencers through Jack Mitchell and the Raglan County Council. Jack Mitchell also organised for the bush to be clear of goats and for gorse to be sprayed.

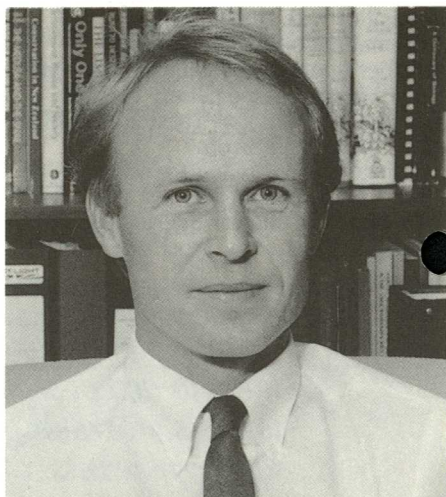
The Harker Reserve is a large gully system of bush featuring taraire, probably growing at its most southern limit. There are also a lot of puriri and kohekohe which attract native pigeons. The bush was kept intact by Rowan Harker's late father, a well known drover in the district.

Changes and Activities

Landscape Architect Leaves

After six years working with the Trust as Landscape Architect, Boyden Evans resigned at the end of 1986 to join a private firm of landscape architects. Boyden was involved in the development phase of the Trust, and enthusiastically initiated new approaches to the Trust's responsibility for landscape conservation. Among these were the Mount Karioi Landscape study, the Revegetation Manual, and the Waipa County Landscape project. The Revegetation Manual in particular brought much public recognition to the Trust, as it was a particularly welcome addition to New Zealand's ecological literature.

Boyden brought enthusiasm and energy to his work, and was particularly committed to promotion of the Trust. His influence on the style and technical standards of Trust literature and displays added



Boyden Evans, Trusts first Landscape Architect. Photo: Eric Taylor.

immeasurably to their quality. His keen advocacy of native plant revegetation and landscape conservation provided an important perspective for the Trust's activities.

Wetlands Book

Gordon Stephenson, Trust deputy Chairman has written a fascinating book about wetlands in New Zealand. Called *Wetlands: discovering New Zealand's shy places* it describes wetlands from the far north to the bottom of the South Island which Gordon has visited. It discussed how wetlands are formed, and has a chapter on created wetlands which gives as examples two wetlands protected by Trust covenants: Sinclairs and Redcliffs. The book is written for people who do not know much about wetlands, and is well illustrated with botanical and wildlife drawings by Tim Galloway and coloured and black and white photographs. References to books and articles and other sources of information such as organisations are given for each wetland. There is also a general bibliography including items on birds, plants and geology.

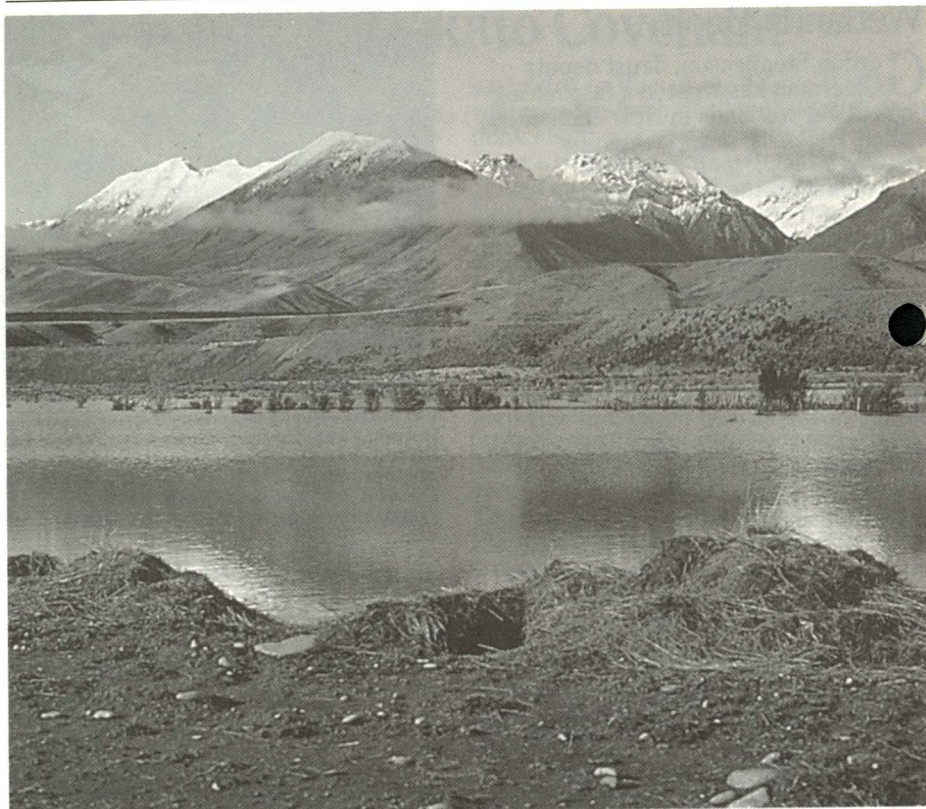


Fernbird, one of the many native birds found at the Sinclair Wetlands, Taieri Plains, South Island. This wetland, protected by a Trust covenant, features in Gordon Stephenson's book on New Zealand wetlands. Photo: Roger Sutton.

The book is an important contribution to New Zealanders' awareness of the importance and vulnerability of our wetlands. They are



Southland regional representative Roger Sutton at the Redcliffe Wetland Reserve, protected by covenant and featured in Gordon Stephenson's book on New Zealand wetlands.



Redcliffe Wetland Reserve, with the Takitimu Mountains. Photo: Roger Sutton.

the least known and appreciated natural features of the environment, and Gordon's enthusiasm for their complex ecology, subtle beauty and intriguing variety will do much to promote them.

Gordon and his wife Celia have a farm near Putaruru which has a bush

reserve and wetland protected by the very first National Trust open space covenant. We are delighted that Gordon has written this book and recommend it to Trust members. It is published by the Government Printer, costs \$16.95, and is available from bookshops.

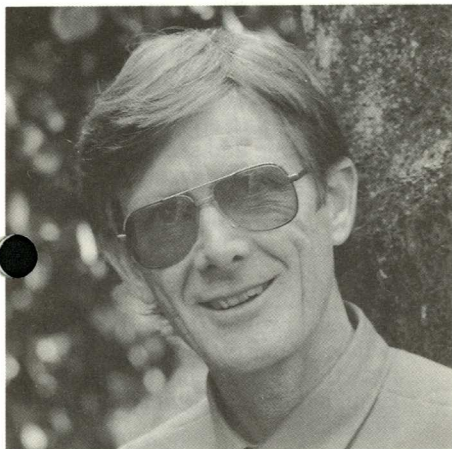
Brian Jones

Mr Brian Jones, the Trust's first national representative specialising in Maori land matters, retired from this position last year. Brian from his wide knowledge of Maori land administration, made a valuable contribution to the Trust's increasing involvement with Maori land protection.

Keith Jones

Keith Jones retired from his part-time position as Trust Accountant at the end of 1986. Keith brought the Trust's finances into order and left a clear system of financial management which will be helpful for the Trust's future management. Keith's warmth and humour is much missed by the staff.

Tupare



Alistair Duncan, Manager of Tupare, New Plymouth.

The Trust has appointed a manager for Tupare, the English style garden in New Plymouth, owned by the Trust. Tupare Manager is Alistair Duncan, who for the last ten years has owned Woodleigh Nursery, at New Plymouth, specialising in rhododendrons and azaleas. His nursery supplied many plants to Tupare when it was owned by the Matthews family. Mr Duncan's family has been involved with horticulture for over 200 years, and his grandfather was a co-funder of the Nursery Duncan and Davies in New Plymouth. Mr Duncan is a member of the Pukeiti Rhododendron Trust and the NZ Rhododendron Association. Alistair and his wife Rene, a High School Teacher, live at Tupare.

Alistair is helped in the garden by Mary McNicoll, a qualified gardener who has worked at Both Pukeiti Rhododendron Trust and Duncan and Davies.

Mick Philips Retires

Mr Mick Philips decided to retire last year from Trust activities after three years as regional representative in Northland. Mick is a retired farmer with

ongoing involvement with the management of the farm that he developed over 35 years. His wide knowledge of farming in Northland proved to be very useful in his work for the Trust and he enthusiastically promoted the Trust. Mick was thanked by the Board of Directors for his contribution to the protection of landscape in Northland. His work is being continued by the new representative, Murray Tapp.

Newsletter Delay and Computerised Mailing List

This is the first newsletter for a long time and we apologise for the delay. The main reason is that we have been putting the Trust mailing list onto computer. Now all members and other Trust contacts are on the data base and address labels can be produced quickly.

Please let us know if your address label is incorrect, if you have received more than one newsletter, or if any other oddities have occurred.

The next newsletter will be distributed in April.

Hollard Gardens Staff

With Jenny Oakley on leave, Hollard Gardens is being managed by Alistair Duncan, Tupare Manager.

Linda Garrett is now working part-time at Hollard Gardens, replacing Ann Chamberlain. The Trust is grateful to Ann for her enthusiastic work in the gardens over the last two years. Graeme Henderson, gardener, now also works in the gardens.

Maternity Leave

Three Trust staff are at present on maternity leave: Jill Zanders, covenant assistant; Suzanne Lark, receptionist; and Jenny Oakley, Manager of Hollard Gardens, in Taranaki.

Open Space Covenants

By the February 1987 Board meeting, 548 open space covenant applications had been approved by the Board and 144 registered. This means that over 4200 hectares of valuable open space are now legally protected.

Since the last newsletter 31 open space covenants have been registered. They are described below and in the next newsletter (number 14).

NEW REGISTERED COVENANTS

AUCKLAND

1. **LOVERIDGE, C W & K M.**
Beaver Road, 1km from SH1 near top of Bombay Hill, Auckland.
Purpose: protect bush and landscape enhancement. 1.24ha forest remnant, being a bush covered gully with trees including rimu, kahikatea, and rewarewa. Bird life includes native pigeons.
2. **MILLER, G K Mahurangi East Peninsula, Warkworth.** Fronts on Te Kapa River.
Purpose: protect bush and bird habitat. 3ha of regenerating coastal

bush with native birds, on 103 hectares of farmland.

3. **DYE FARMS, Kaukapakapa**
Purpose: protect native bush and its amenity and educational value to the village and school. 5ha of bush clad hillside on a large dairy farm facing Kaukapakapa village. Mainly taraire, with totara, kahikatea, and kowhai.
4. **FLOWER, T H & C M, Wairere Road, Waitakere.**
Purpose: protect the bush. 4.68ha (whole property) of secondary growth, regenerating bush with rimu, kahikateas, and a few kauri rickers.

SOUTH AUCKLAND

5. **HURLEY, Mrs A, Whiriwhiri Road, South-west of Waiuku.**
Purpose: protect native bush and birds. Two areas: 4ha of podocarp and broadleaf including rimu, miro, rewarewa, karaka, and 2ha of wetland and bush including kohekohe, and nikau.
6. **DE JONG L & A, Tui Road, 1.5 km from Te Aroha/Paeroa, SH26.**



De Jong Covenant.

Purpose: protect native flora and fauna and preserve natural scenic values for Te Aroha. A 1ha narrow strip of bush covered bank alongside the road, including puriri, tawa, rimu, five-finger.

There is planted kauri, rata, and nikau and excellent regeneration.

7. COWAN, Arthur B, Waimahora Road, 30 km S.E. of Otorohanga. Purpose: protect bush. Whole property covenant, 363.5ha of steep bush covered ridges and valleys. Most of the area had been logged but there are fine stands of remaining bush and excellent regeneration. The property includes a small hut for recreation and the planting of native plants in nearby areas.

8. NIKAU BROS, P & A Woodward, Waikaretu Road, 55 km west of Huntly.

Purpose: protect forest from clearing and protect landscape values as seen from surrounding areas. 10ha tall podocarp forest,

including puriri, kohekohe, rewarewa and lancewood. Visible from the Waikaretu-Port Waikato Road.

9. WINDOVER DOWNS LTD (D Kerr), Waikaretu Road, 40 km west of Huntly.

Purpose: protect bush, road views, natural vista. Two areas of bush, totalling 14ha, including tawa, rimu, kahikatea, and plentiful birdlife. Visually significant in an area that has very little bush left.

10. WILMAR, E & J, 5 km from Matata on Manawahe Road.

Purpose: protect bush and water supply. 10ha on a 78ha property. The bush drops from ridge top down to lower hill country.

Predominantly tawa and rewarewa. The area contains a very large spring. The water used by Matata town comes from Lake Rotoma, 27 km away, which has no open outlet.

11. TIRAU FARMS (S & P Gray), Parapara Road, Tirau.



Tirau Farms Covenant.

16 QEII NATIONAL TRUST NEWSLETTER

Purpose: protect flora and fauna, and road views. 7.7ha of forest remnant on 131ha of hill country. Includes tall kahikatea and pukatea forest, with some mangaeo. S Gray has planted many kauri, totara, and puriri, now very large and evident.

12. GOSLING, T & M, Waotu South road, Putaruru.

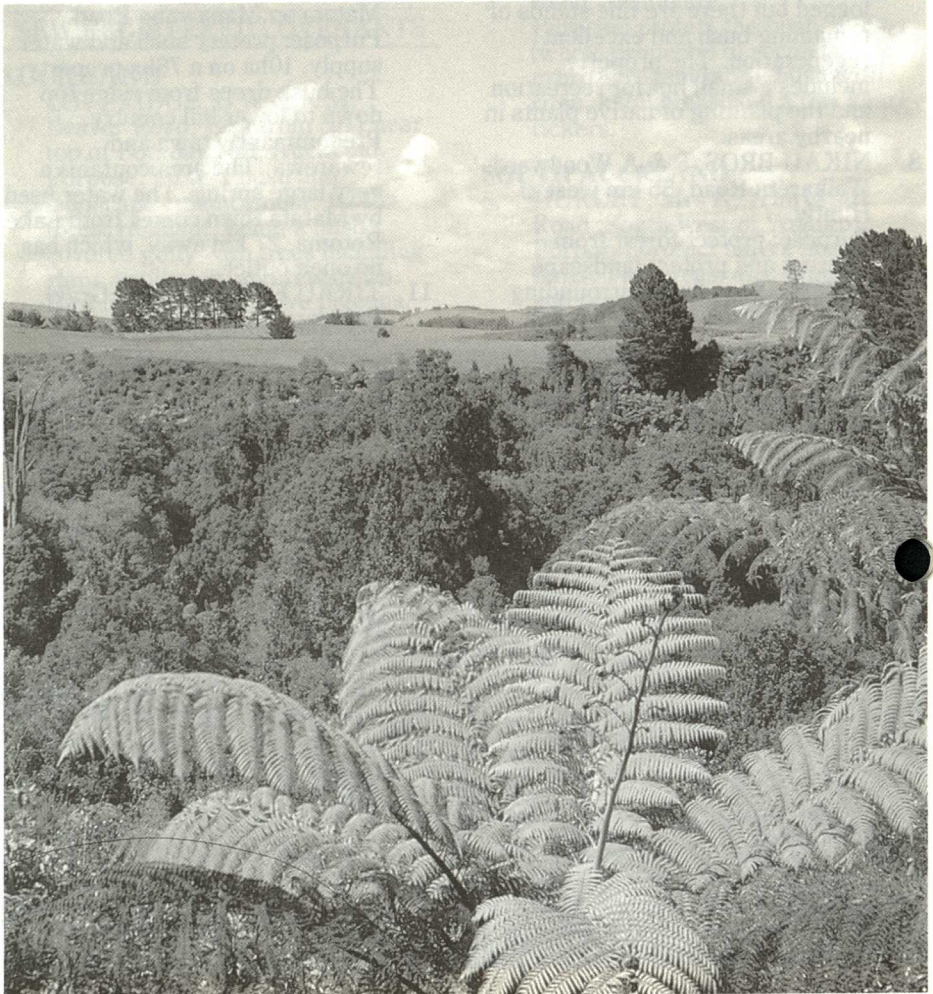
Purpose: to enlarge adjoining area already protected by covenant, to

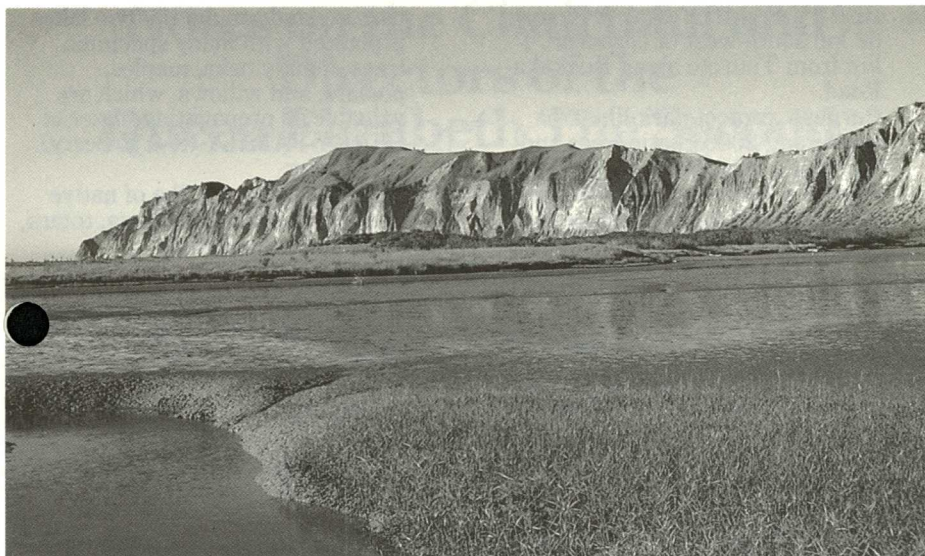
protect large podocarp trees from milling, and to enhance rural vista. 2.9ha of forest on 55ha of dairy farm in pasture. The forest adjoins the Lamb covenant. It contains about 12 giant podocarp trees and tawa, pukatea, and old mangaeo.

13. FOXLEY, A I & S P 16 km south of Gisborne on the coast, SH2.

Purpose: protect the lagoon for wildlife and scenic values. 55ha on 240ha property. The covenant

Gosling Covenant.





Foxley Covenant.

protects about half the Muriwai lagoon and estuary, a shallow tidal lagoon regionally significant for its variety of waterbird species

(migratory wading birds.) It is of high educational and ecological value, and an important landscape feature from SH2.



Berry Covenant.

14. BERRY FAMILY (R & E Berry), 62 km south-west of Gisborne, 4 km from Tiniroto along Ruakaka Road.

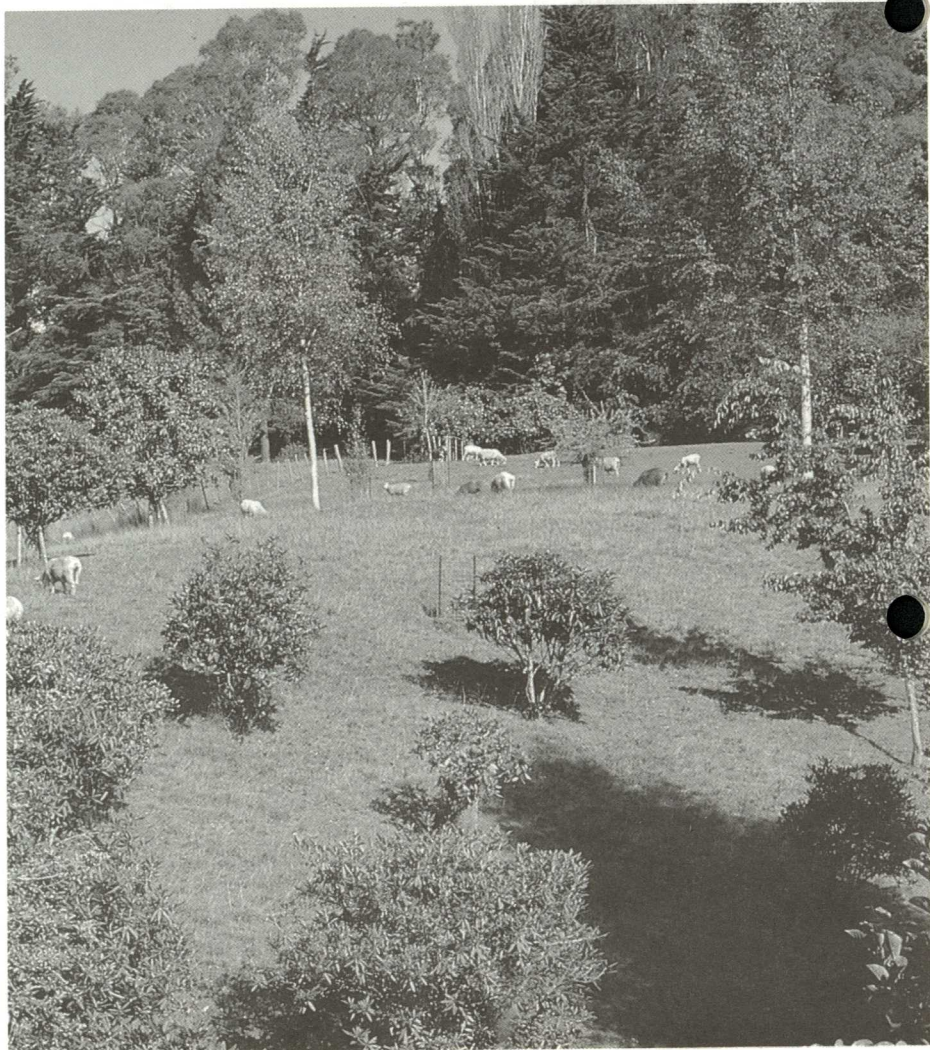
Purpose: protect park-like area containing 2000 exotic trees and two lakes. The covenant protects 55ha of a 766ha property of rolling and steep hill country adjacent to the Hangaroa River. The rolling

pasture land around the two lakes is planted with many specimen trees, mainly oaks, maples, poplars, and willows, which are valuable as propagating material.

15. BERRY FAMILY (R & E Berry). As above.

Purpose: protect 4.3ha of native rain forest containing tawa, totara, matai, and rewarewa.

Berry Covenant.



Notes on the Chairman and Directors of the Queen Elizabeth The Second National Trust March 1987

● CHAIRMAN

Hon Leslie Walter Gandar, D. Sc.
(Hon Causa), FNZIAS, — Farmer,
Fielding

Mr Gandar was a Member of
Parliament from 1966 to 1978 and was
the New Zealand High Commissioner in
London from 1979 to 1982.

DIRECTORS

Mr Rei Bailey of Wanganui
Appointed by NZ Maori Council.
Diploma Agriculture, Massey
University. Member of NZ Maori
Council and Land Use Advisory
Committee.

● **Juliet Batten** of Auckland
Elected by Trust members. University
Lecturer. Auckland University and has
a background in environmental studies,
teaching and research.

Mr Assid Khaleel Corban of
Henderson
Municipal Association Representative,
Mayor of Henderson. Executive
Member of Municipal Association of
New Zealand.

Mr Owen Jennings of Karamea
Federated Farmers Representative,
Chairman, Dairy Section, Federated
Farmers. Member of North West

Nelson State Forest park Advisory
Committee and Honorary Ranger.

Professor Peter John McKelvey
of Christchurch

Appointed by the Minister of Lands,
Dean of the faculty of Forestry at
Christchurch University 1967. BSc (NZ)
and BSc(For) (Edin).

Mr Charles Stuart Masters of
Hamner

Appointed by the Minister of Lands.
Prominent retired Auckland
businessman. Active and keen interest
in outdoor pursuits and open space.

Mrs Margaret (Bunny) Mortimer
of the Waikato

Country Association Representative.
Waipa Councillor, member of Pirongia
Afforestation, the Executive and Town
Planning, and Reserves Committee.

Mr Gordon Keith Stephenson of
Waikato

Deputy Chairman of National Trust.
Federated Farmers Representative.
BSC (Ag) Reading UK. Farmer.
Former member of the Dominion
Executive of Federated Farmers. An
instigator of the original Heritage Trust
Scheme.

Mr Gary Taylor of Waitemata

Elected by Trust Members. MA
(Hons). Environmental Consultant in
private practice, and Waitemata City
Councillor. Foundation member of the
Trust.

“The Department of Conservation... is closely involved with the work of the Queen Elizabeth the Second National Trust, the Historic Places Trust, the New Zealand Walkways Commission, the National Parks and Reserves Authority and the Protected Natural Area Programme...”

From Department of Conservation
information pamphlet, March 1987.

Published by:

Queen Elizabeth the Second National Trust, PO Box 3341, Wellington.
Colenso House, 138 The Terrace, Wellington. Telephone (04) 726-626

Registered at PO Headquarters Wellington as a newsletter.